



# Salado Independent School District Facility Planning Committee

Meeting 05  
Monday, May 1, 2023  
6:00 p.m.



# Meeting 05 Agenda

Review / Recap

Bonding Capacity & Tax Impact Scenarios

Prioritization Results - *Potential Elements of a Long-Range Plan Exercise*

Conceptual Project Options

Project Options with Cost Estimates

"Build a Bond" Exercise - *Small Group*

What's Next?

Thank you! Questions?





# Review / Recap

# Meeting Schedule

- ✓ Monday, **February 20**
- ✓ Wednesday, **March 1** – *Campus Tours*
- ✓ Monday, **March 6**
- ✓ Monday, **March 27**
- ✓ Monday, April 10
- Monday, **May 1**
- Monday, **May 22**

information gathering

project prioritization & building consensus



# Agenda Recap – Meeting 04

Review / Recap

Safety & Security Focus Presentation

Construction Cost Trends Presentation

Table Workshops & Prioritization – Potential Elements of a Long-Range Plan

What's Next?

Thank you! Questions?



# Purpose

The **purpose** of the Facility Planning Committee **is to review and evaluate information including student performance data, financial data, demographics, facility needs, and comprehensive District goals.** The Committee will develop and recommend a long-range plan that will help Salado ISD meet the challenges of the future as well as support future growth and change.



# Determine if a Bond is Needed

Determine if a bond referendum is needed.



Develop a package that meets our needs and can be supported by the Board of Trustees and ultimately the voters in Salado ISD.

# Our Promise

- Respect your **time**
- Provide you with all the **tools** you need
- Adjust our plan based on your **feedback**
- Ensure the process is **transparent**
- Answer all **questions** and serve as a **resource** to you





# Your Charge

- **Review** information related to the District's facilities needs, enrollment trends, and educational vision
- Consistently **attend** meetings and **contribute**
- Work with the **"big picture"**
- **Express** your point of view and be open to other viewpoints
- Provide **input** regarding District's facilities ability to support education in your community
- Provide **insight** into what the broader community might support
- Serve as **ambassadors** for the process and the proposed plan
- ...and hopefully have **fun!**



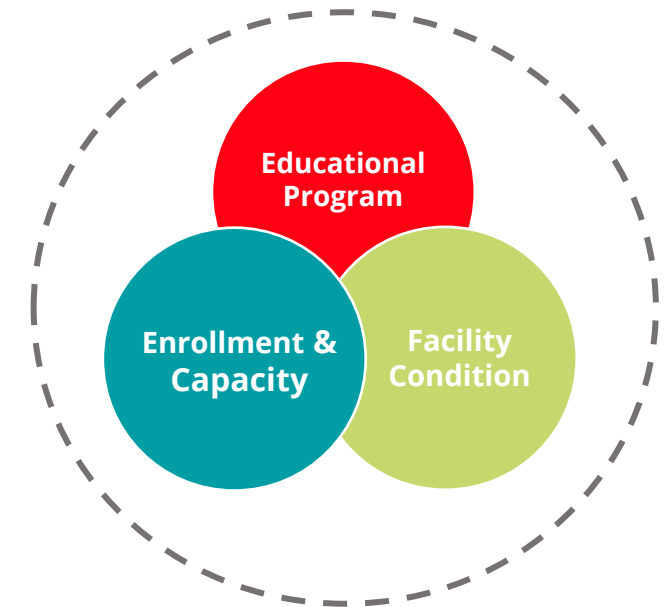
# What is a Long-Range Facility Plan?

## Comprehensive summary of facility need

- ✓ Ability to accommodate educational programs
- ✓ Capacity to accommodate projected enrollment
- ✓ Condition of District's facilities

## Strategic management tool for District facilities over time

- ✓ Explores modernizations, additions, replacements, and new construction
- ✓ Identifies opportunities for more efficient use of sites and facilities
- ✓ Creates a prioritized plan that aligns with community support



A graduation ceremony is taking place at Crusader Stadium. Graduates in red gowns and caps are seated on a green field, many with their arms raised. In the background, a large screen displays a graduation scene. The stadium's name, "CRUSADER STADIUM", is visible on the structure. A red vertical line is positioned on the left side of the image.

# Bonding Capacity & Tax Impact Scenarios

# Prioritization Results



**SIGNING DAY**



# Prioritization Exercise Results

Project List	Weighted Scale	Tier one			Tier two			Multiplier
		High	Medium	Low	High	Medium	Low	
New High School	50	5						
New Ag Barn	45	4		1	0			
District-wide IT infrastructure Upgrades	40	2	2		2			Tier 1 High 10
District Stadium (7,000 Seat Capacity) & Field House	41	3	1	1				Tier 1 Medium 6
Bi-Directional Amplifier	33	2	1		1	1		Tier 1 Low 5
New Elementary School - Phased on Existing Site	32	2	2					Tier 2 High 4
HVAC Unit Replacement at High School	29	1	1	1	2			Tier 2 Med 3
District-wide Instructional Technology Upgrades	24	1	1		2			Tier 2 Low 2
New Elementary School - Greenfield Site	22	1	1		1		1	
Fencing Replacement at TAE Campus	22	1	2					
Connect Corridors between TAE Buildings, Covered Walkway to T-1 Gym	20	2						
New Classroom Furniture for TAE Campus	21	1	1	1				
New Maintenance/Grounds Shop	16	0		1	1	1	2	
Upgraded/New Digital Marquee Signs (District-wide)	14	1					2	
Food Service Equipment Replacement at TAE Campus	15	1		1				
Kitchen Expansion at T-2	15	1		1				
New Dedicated Covered Wash Bay at Transportation	13				1	3		
Expand Parking Yard at Transportation	13				1	3		
Additional Restrooms for T-1, T-2 Cafeteria	14		1	1		1		
6' Security Fence at Transportation	12				1	2	1	
3rd Serving Line at TAE Campus	12	1					1	
New Flooring in T-1 Gym	12		2					
Turf Area Outside Cafeteria at Middle School	13		1	1			1	
Dedicated Technical Center/Shipping & Receiving	11			1	1		1	
New Parking Lots at TAE and High School, Sidewalk Upgrades at TAE	11		1	1	0			
Updated Playgrounds at TAE Campus	11		1	1				
Built-in Storage for TAE Campus Classrooms	9		1			1		
Middle School Classroom Addition	7				1	1		
Replace Road Base/Gravel Parking Lot with Concrete at Transportation	8					2	1	
High School Addition	5					1	1	
Thomas Arnold Elementary - Renovations	4						2	
District Natatorium	2						1	
Convert T-3 Lounge into Additional Dedicated Classroom	2						1	





# Conceptual Project Options

# SALADO ISD NEW HIGH SCHOOL CONCEPT SITE FIT



# SALADO ISD NEW HIGH SCHOOL CONCEPT SITE FIT





# SALADO ISD NEW HIGH SCHOOL AND NEW STADIUM CONCEPT SITE FIT



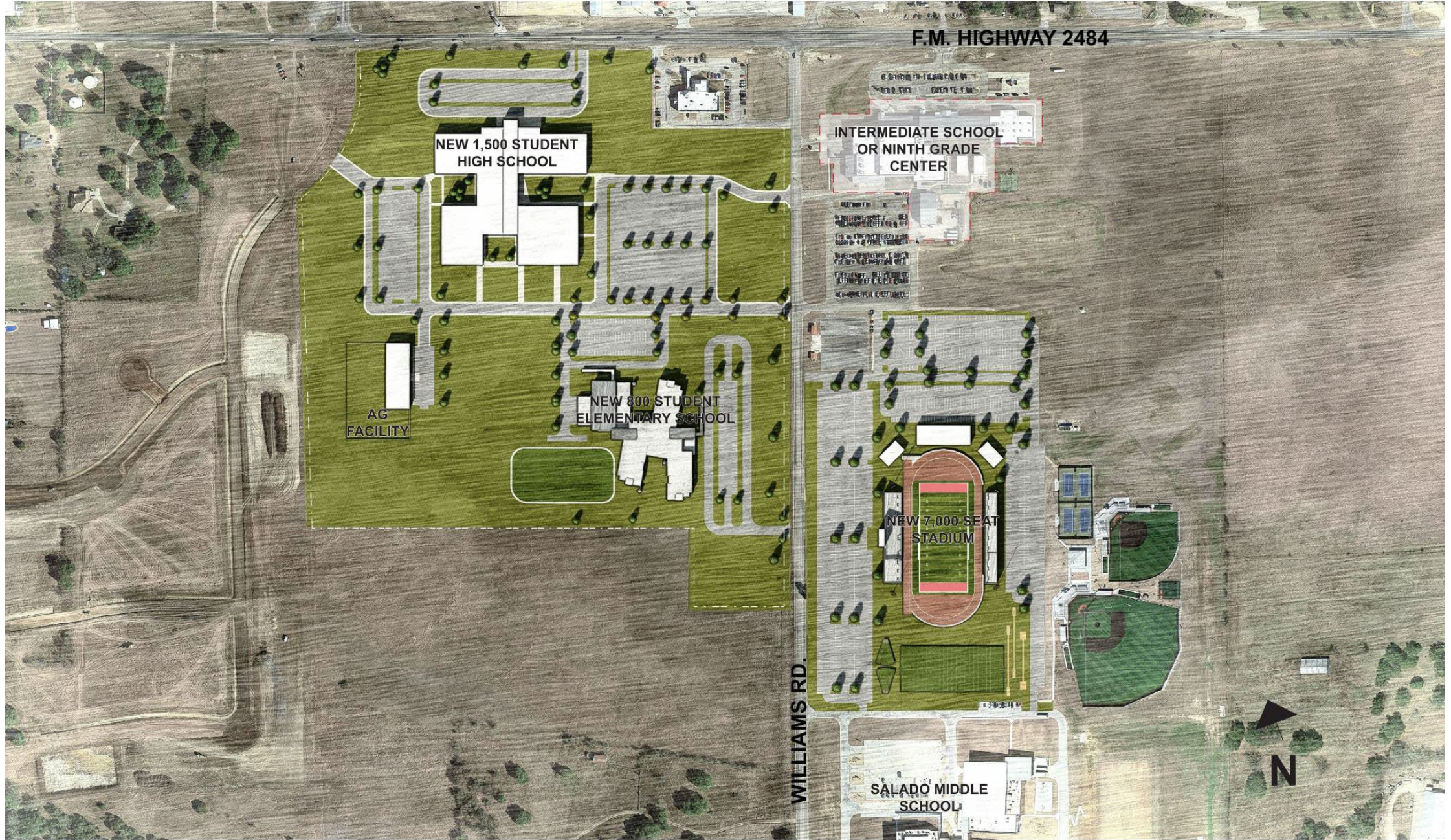
# SALADO ISD NEW HIGH SCHOOL AND NEW STADIUM CONCEPT SITE FIT



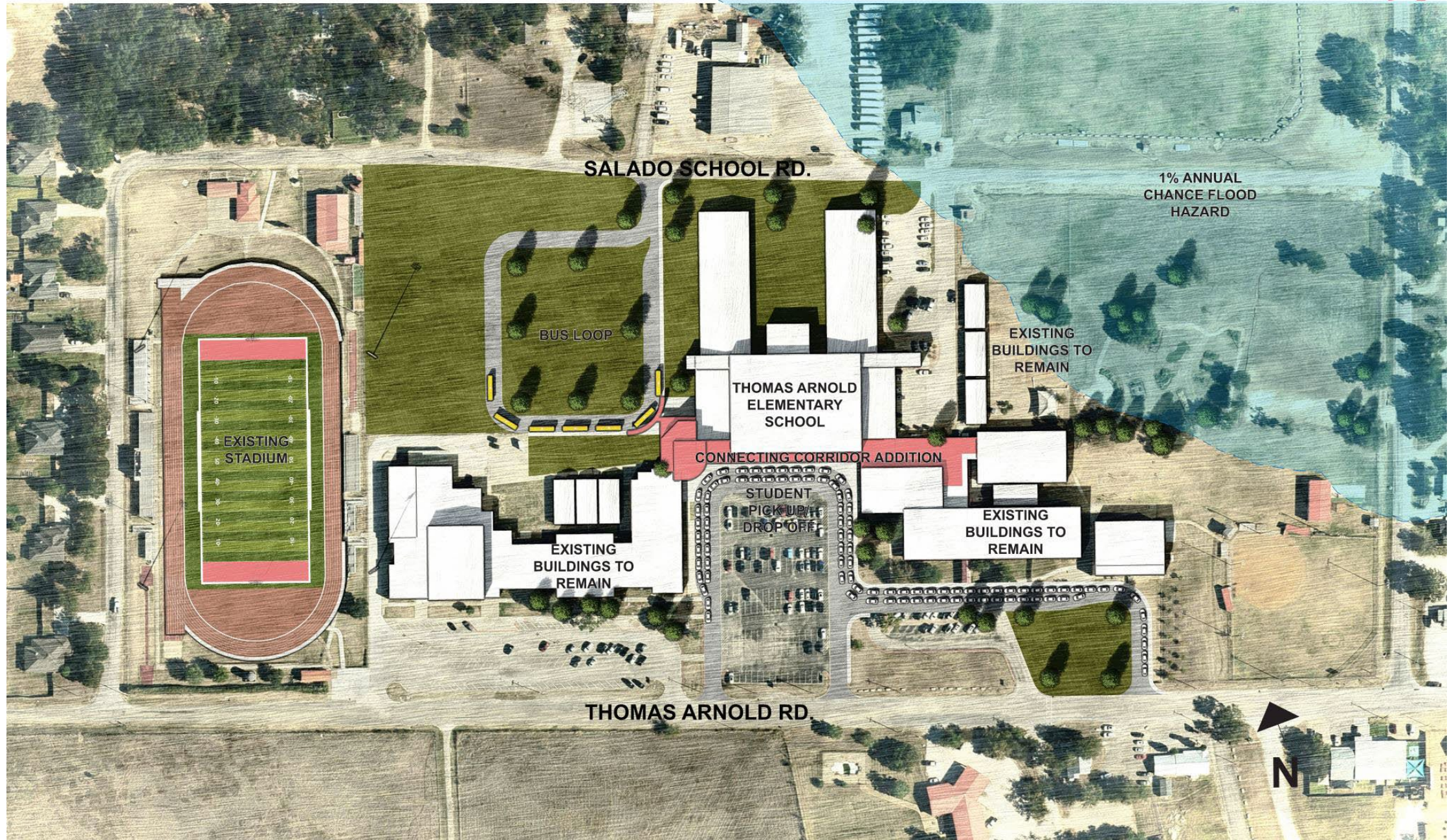
# SALADO ISD NEW ELEMENTARY AND NEW STADIUM CONCEPT SITE FIT



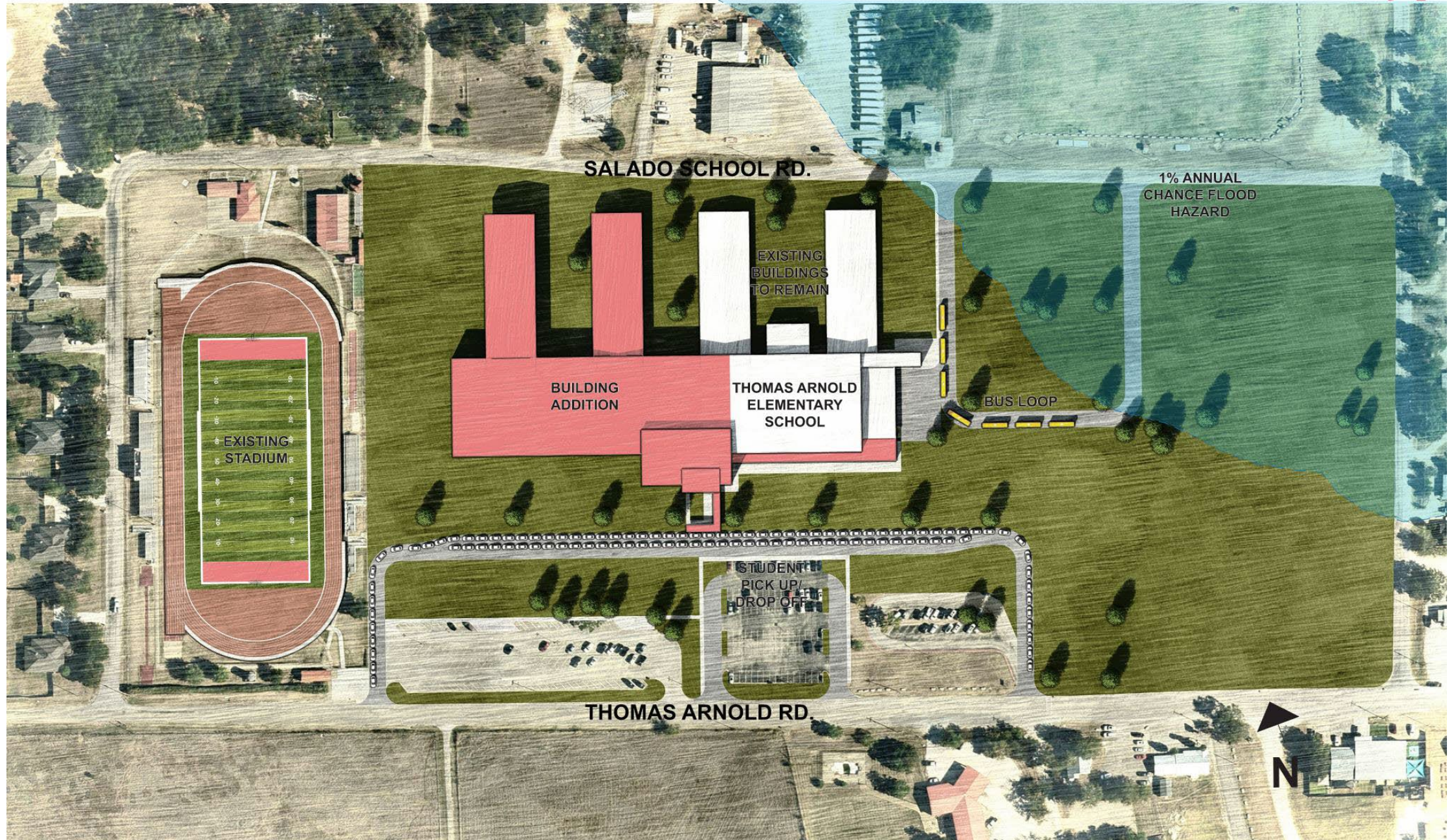
# SALADO ISD NEW HIGH SCHOOL, NEW STADIUM, AND NEW ELEMENTARY CONCEPT SITE FIT



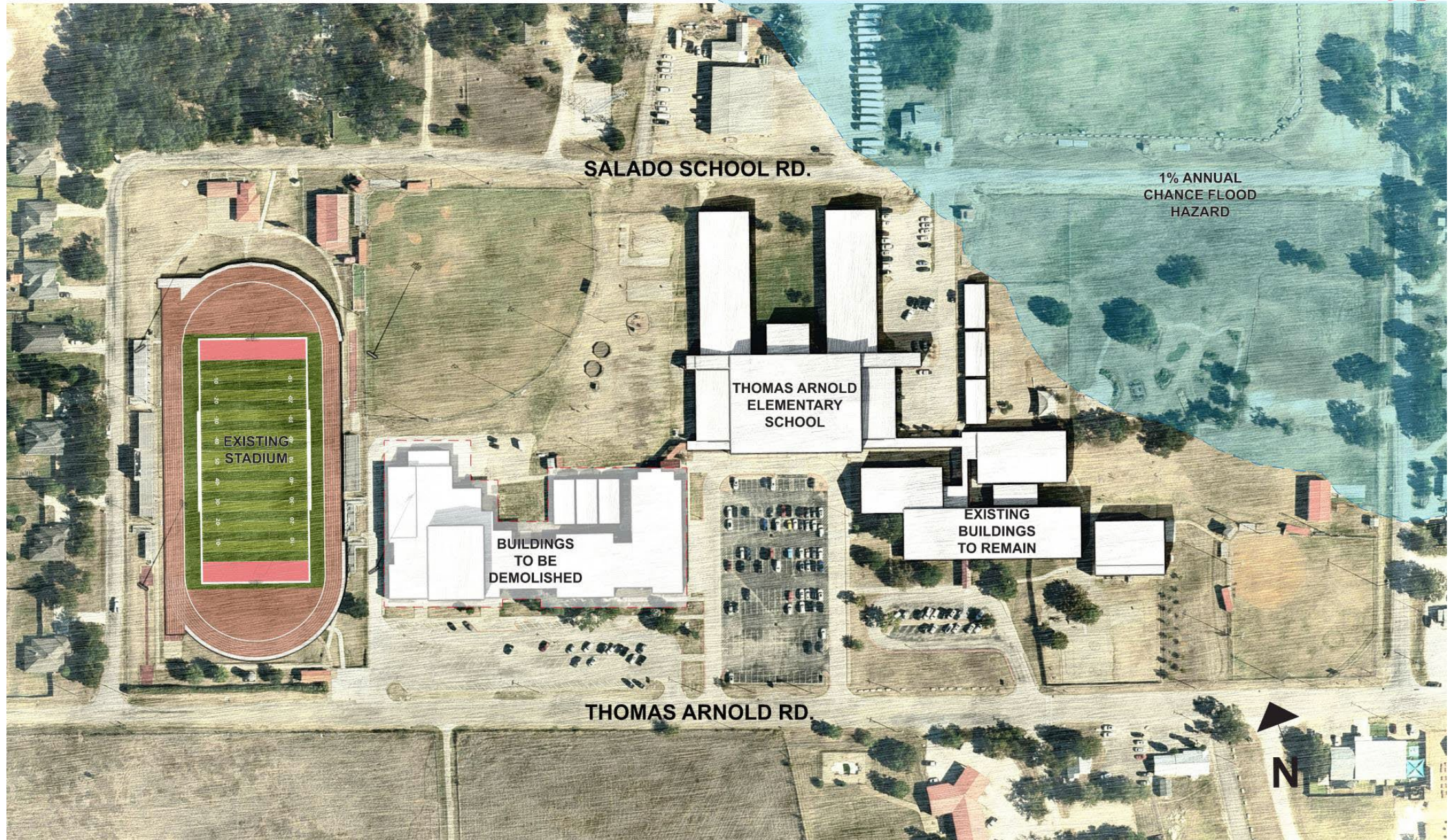
# SALADO ISD ELEMENTARY RENOVATION - CONNECTING CORRIDOR ADDITION



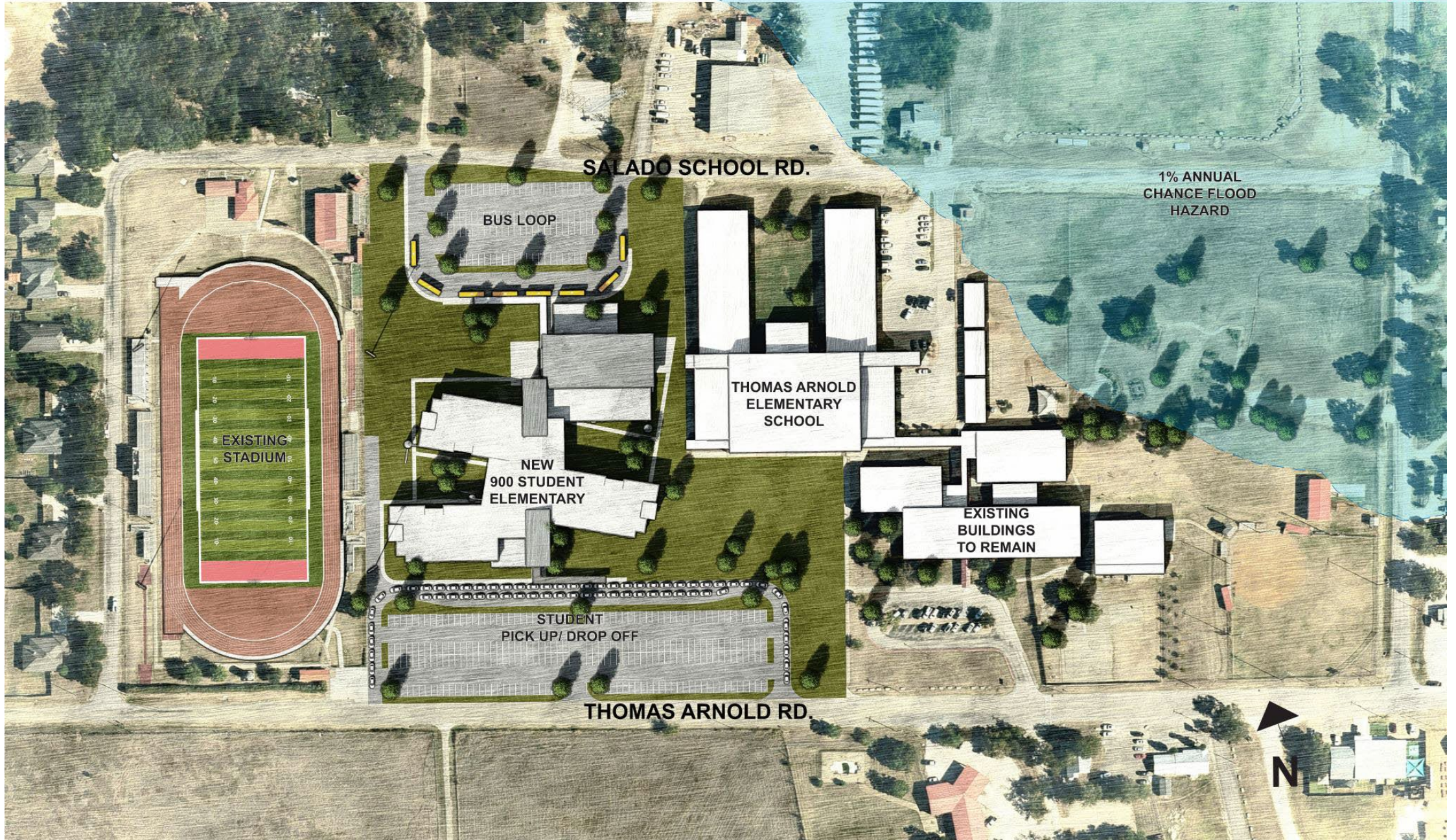
# SALADO ISD ELEMENTARY RENOVATION - BUILDING ADDITION



# SALADO ISD NEW ELEMENTARY SCHOOL PHASE I

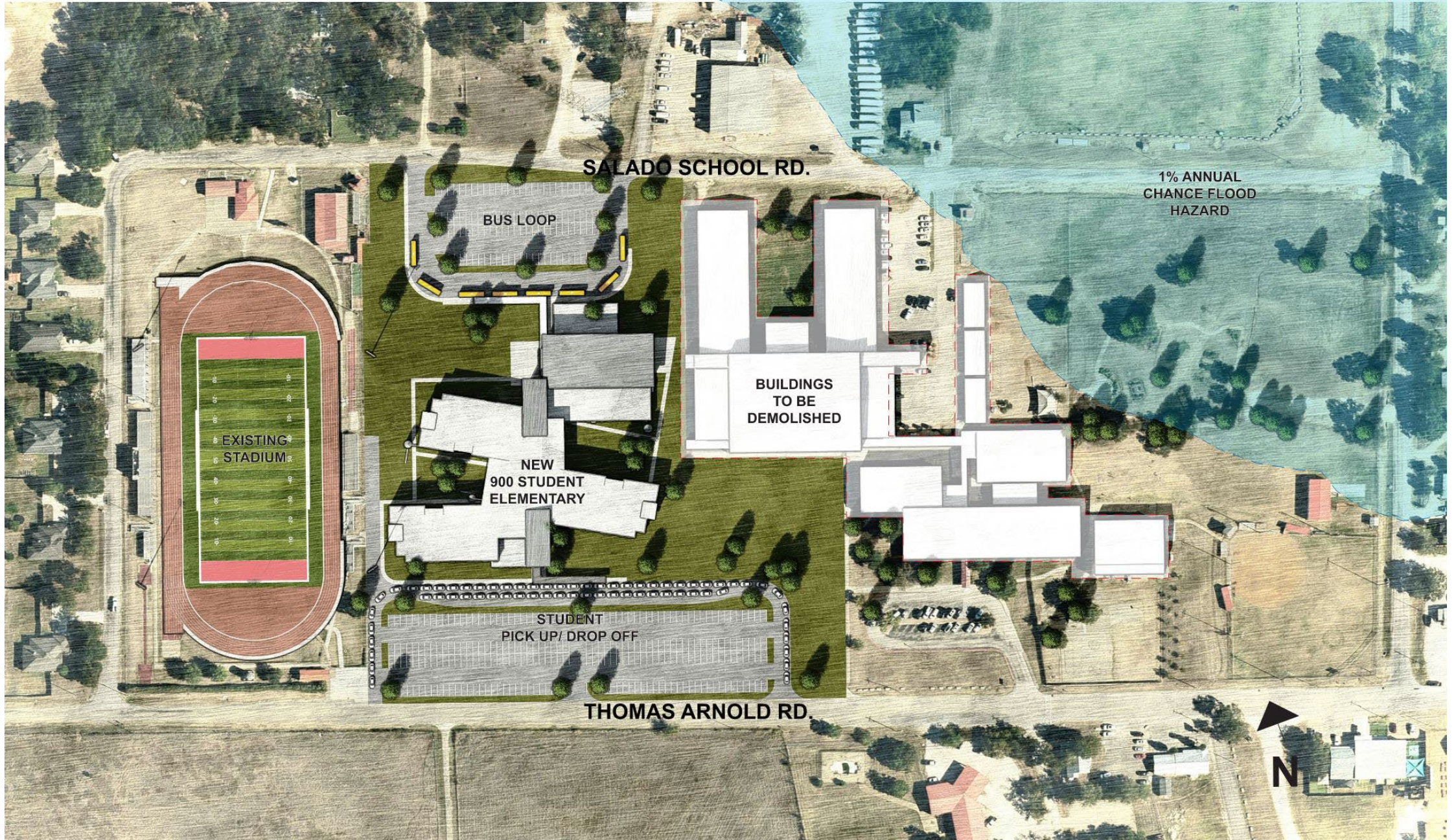


# SALADO ISD NEW ELEMENTARY SCHOOL PHASE II

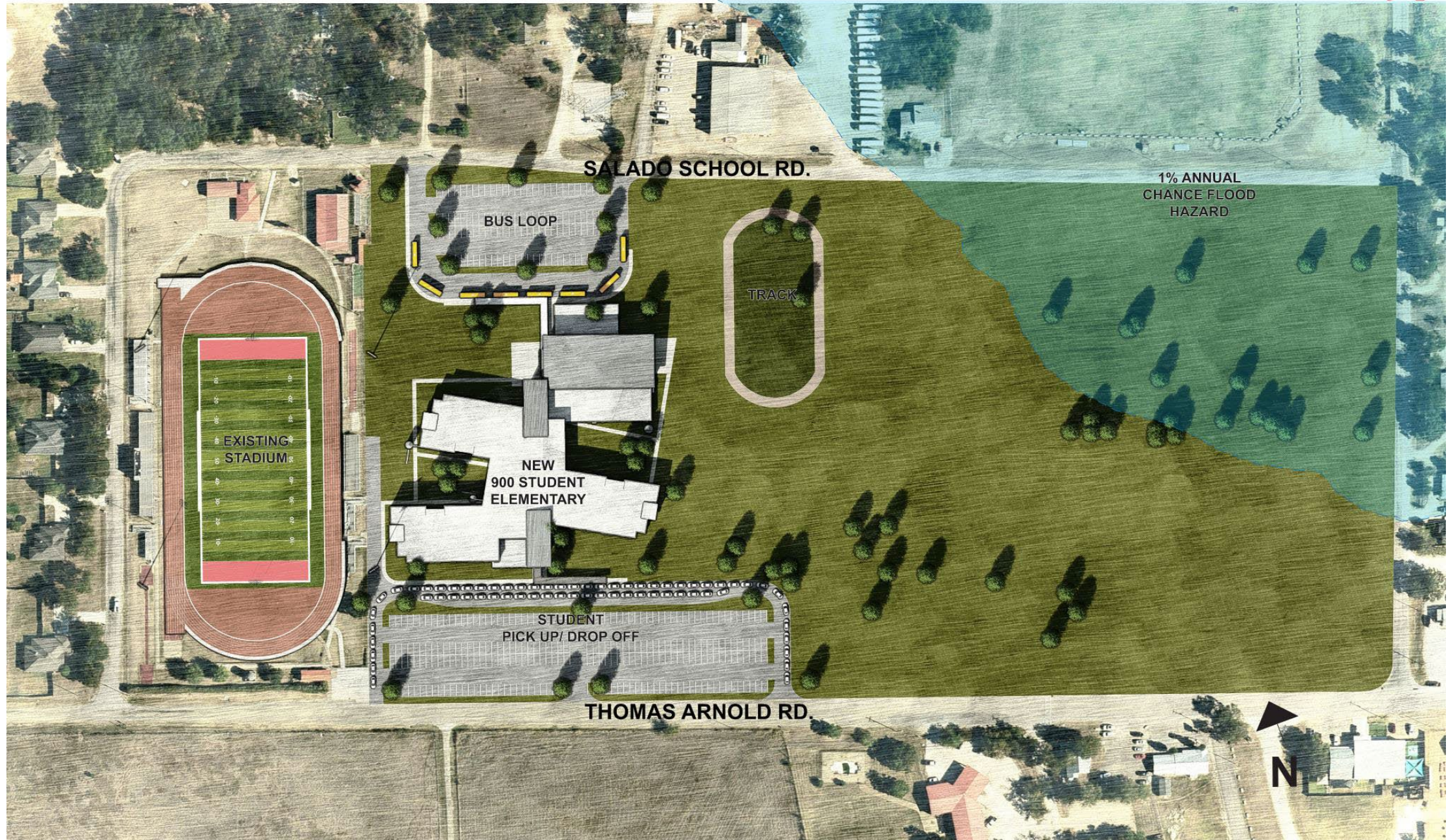




# SALADO ISD NEW ELEMENTARY SCHOOL PHASE III



# SALADO ISD NEW ELEMENTARY



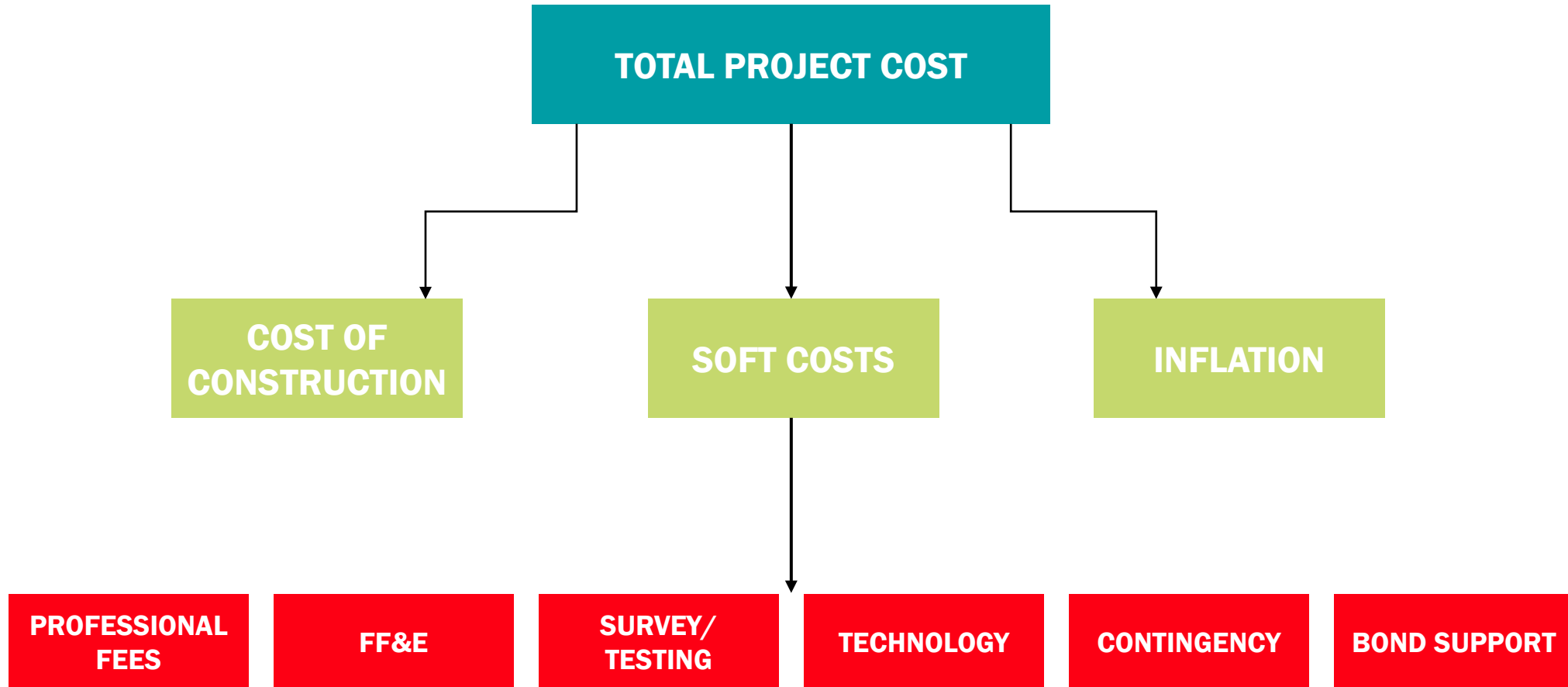
A large group of approximately 50 students, both male and female, are posed on a wooden stage in front of a dark blue curtain. They are arranged in several rows, with some students in the front row holding a small award or certificate. The students are dressed in casual attire, including t-shirts, hoodies, and jeans. The text "Project Options with Cost Estimates" is overlaid in large white font across the center of the image. A red vertical line is visible on the left side of the image, near the text.

# Project Options with Cost Estimates

# Construction vs. Project Costs

**COST OF  
CONSTRUCTION**

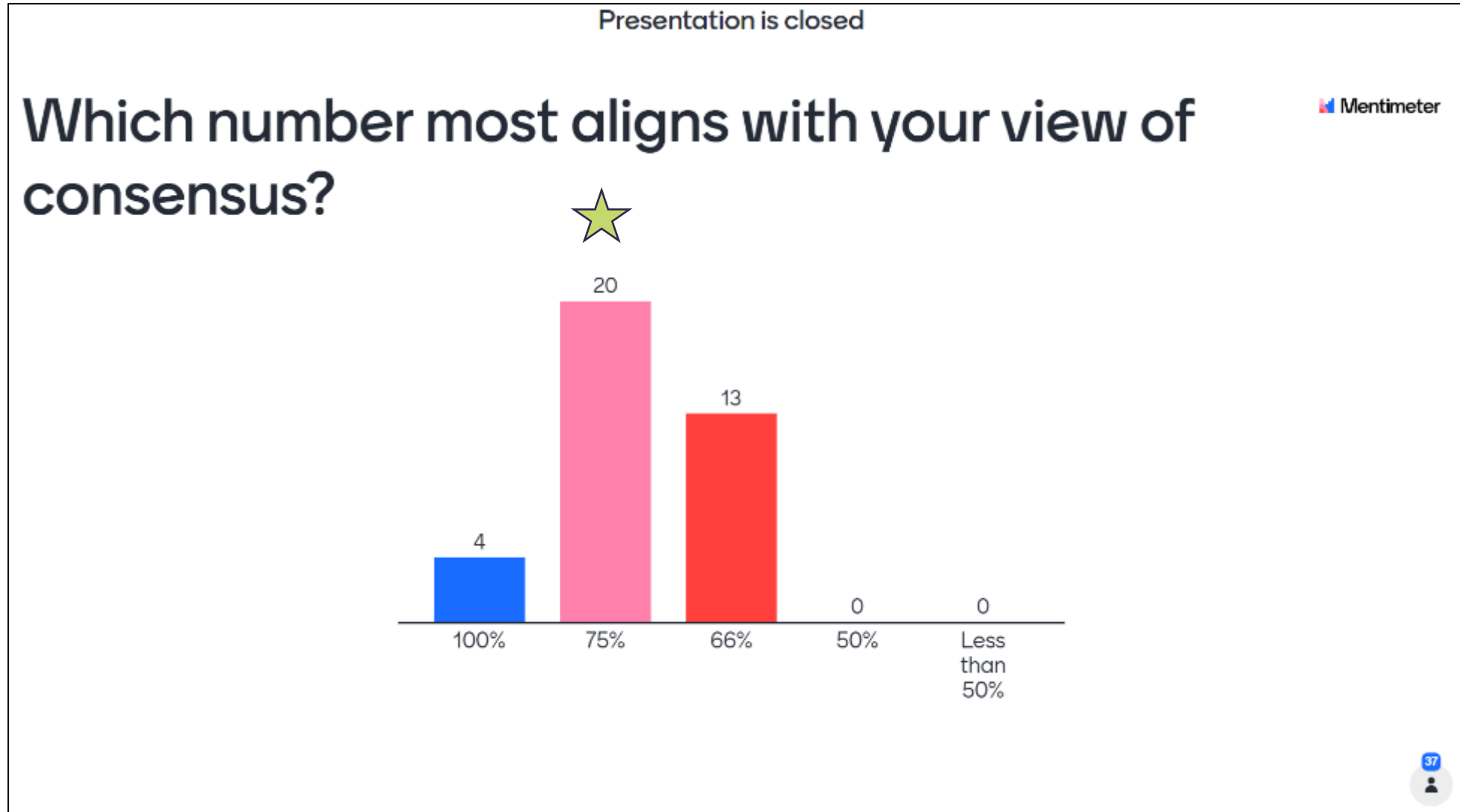
# Construction vs. Project Costs





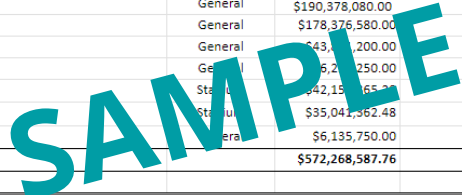
# "Build a Bond" Exercise

# Reminder on Consensus:



# Table Workshops – Bond Allocation Matrix

## Let's Get to Work!

PROJECT NUMBER	PROJECT NAME	PROJECT DESCRIPTION	COMMITTEE COMMENTS	PROPOSITION	ESTIMATED PROJECT COST	VOTE COUNT (For)	VOTE COUNT (Against)	Consensus Threshold (75% = Consensus)	INCLUDE PROJECT IN POTENTIAL BOND?	2023 POTENTIAL BOND PROJECT TOTAL COST
										
<b>New Construction Projects</b>										
1	New High School	1500 student capacity		General	\$190,378,080.00					\$0.00
2	New High School	1,300 student capacity / 1,500 CORE		General	\$178,376,580.00					\$0.00
3	New High School Auditorium Addition			General	\$43,112,200.00					\$0.00
4	New Elementary School	800 student capacity / New Site / PK-4		General	\$5,210,250.00					\$0.00
5	New Stadium	7,000 seats / Field House, Concessions, Scoreboard, Press Box		Stadium	\$42,150,652.48					\$0.00
6	New Stadium	5,000 seats / Field House, Concessions, Scoreboard, Press Box		Stadium	\$35,041,362.48					\$0.00
7	New Ag Facility			General	\$6,135,750.00					\$0.00
<b>TOTAL</b>					<b>\$572,268,587.76</b>					<b>\$0.00</b>
<b>Renovation / Addition Projects</b>										
8	Connected Corridor Addition at TAE	does not include drive reconfig		General	\$41,839,200.00					\$0.00
9	TAE 1 & 3 Rebuild + Site Improvements	Demolish TAE-1 and TAE-3, 105,000 SF Building Addition, Reconfigure Bus Loop + Student Pick-Up / Drop-Off		General	\$85,080,348.00					\$0.00







WHAT SOIL  
GROWS  
PLANTS THE  
FASTEST



# What's Next?

DOES  
EFFECT  
SHEEP?

(ace hardware)  
rials.  
plant pots and  
soil and peat  
Then after that  
is inch under the  
of water and pour  
up in each of the  
of soil each day.  
ure to water them  
get pleasure  
day for



predators  
Spiders, slugs, beetles, and other  
beetles.



Workers live to 15-20 days in the  
summer of winter 150-200  
The queen lives to 1-2 years.



111

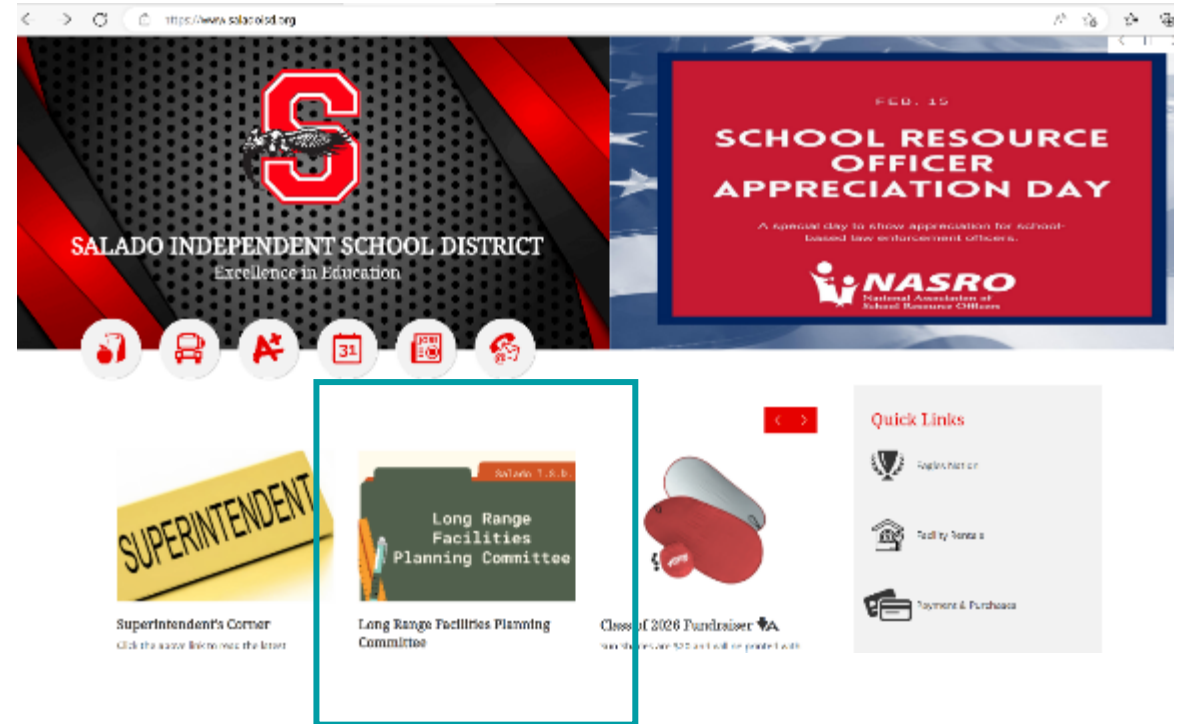
# Meeting #6 – May 22

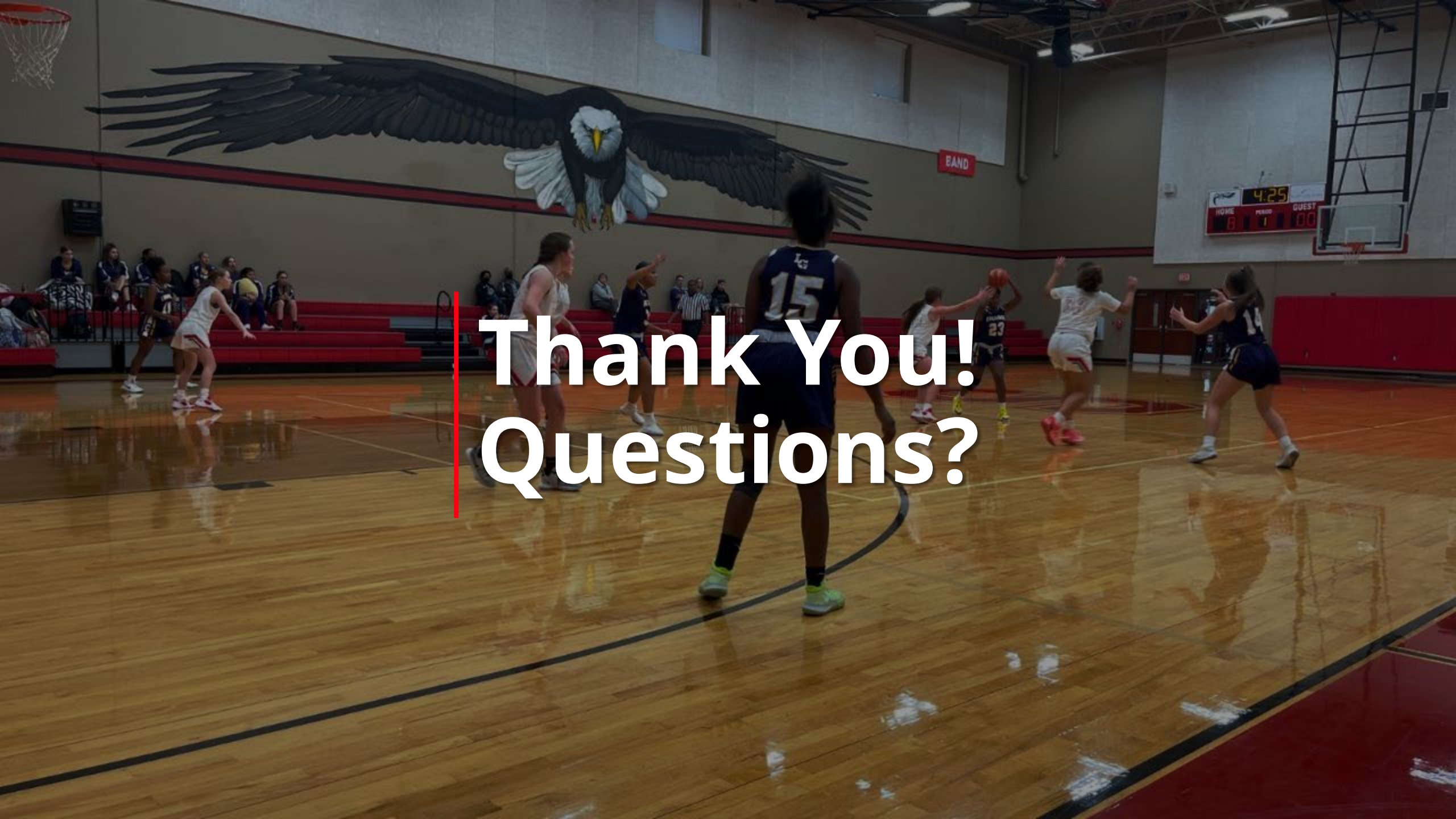
- Review Table Votes
- Conduct Final Deliberations
- Discuss Next Steps



# Ongoing Communications

Agendas, presentation slides, and supplemental information will be available online accessible through the District's homepage:





**Thank You!  
Questions?**